

SOUL OF LIVING

COMPANY PROFILE

Life is a journey not a destination.

Ralph Waldo Emerson

—

2017

2018

CAPITAL®
(G) ATMOSPHERA®





CONTENTS



The company Company Presentation	Page 04
Stores Office Into the World	Page 05
Capital Luxury Interiors	Page 08
Atmosfera Soul of Outdoor	Page 25

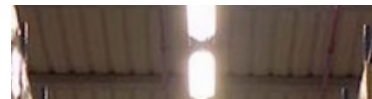
Contract Atmosfera	Page 36
Yacht Luxury Division	Page 72
Press Capital - Atmosfera	Page 100
General Contacts Company	Page 103



THE COMPANY
7.300 Mq



THE OFFICES
700 Mq



THE WAREHOUSE
6.000 Mq



OUR SPACES

- Company
- Offices
- Warehouse
- Showroom

THE COMPANY

The company began its story more than 40 years ago, thanks to its President Paolo Viscovich, and has since then accumulated experience in the luxury and outdoor furniture sectors.

Since its establishment the company is continuously evolving and growing in global markets as an organisation with Padua-based headquarters and showroom, but offices and showrooms also in emerging markets.

Capital initially develops in-house creative designs and works its way through all stages of material research and production. We actually believe that the value of in-house development is being passed on to the final product in terms of uniqueness and excellence.

MATERIAL QUALITY

We are not influenced bound by industrial concepts but by artisan production and method: not being bound by use of certain materials or thechnology and being able to produce in cycles that depend on our hands proves that we have no limit except our own mind. Capital is a company where creative spirit and know-how are nourished by the passion for our work and the needs of customers.

HANDCRAFT CARPENTRY

Wood, metal, marble, fabric and leather are our favourite materials: we believe that the added value, recognized worldwide as 'Made in Italy', consists in knowing how to work with these materials and combine them to create unique pieces. Each artifact we create has a natural consequence and impact on the environment: we try to ensure that Capital products respect the environment and do not harm those who manufacture them.

DESIGN TAILOR MADE

Let's add up an adaptable design that meets different styles and moods.

The mix of materials, fabrics and finish is today the distinguishing element of the most exclusive settings: our aim is to add value to outdoor areas, giving them comfort and making them recognizable.



ITALIAN MATERIALS

The continuous search for natural materials of Italian origin guarantees highly controlled and carefully selected products,



HANDCRAFT

as expression of a value that furniture will be enhanced through the artisan production. Capital and Atmospha offer you a selection of unique and special materials and processes, a part of which may be found in our sample collection.



QUALITY

Nevertheless, the company aims at moving forward always using new materials requested by customers on exclusive tailor made creations. We always use superior, naturally seasoned and dried woods.



DESIGN TAILOR MADE

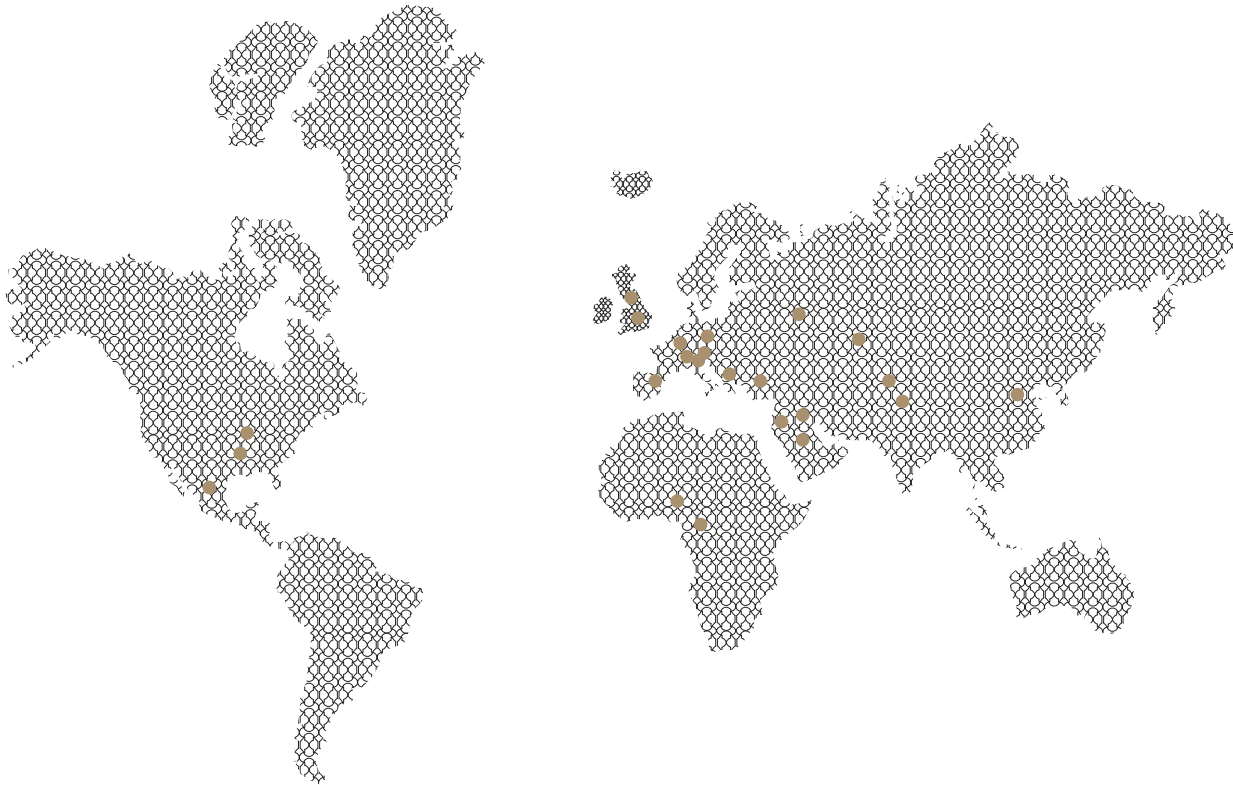
Starting from market and customers demands, Atmospha Creative Lab focuses on research and products development, using innovative materials suitable for Outdoor use.

OUR LOCATION

OFFICES IN THE WORLD

THE WORLD OF ATMOSPHERA

STORES



Atmosfera Company | Via Cesare Battisti, 68 - 35010 Limena, Padua, ITALY

Our showroom is situated at 30 km from Venice, adjacent to our headquarters. It's a space where you can see the set-up pieces of the collection but above all, like in the atelier of a tailor, you can see materials and creative ideas taking shape according to customer requirements. Therefore, it's the place that best describes us and illustrates our approach to customer projects through the choice of products and materials to be introduced in their homes. The same concept has been applied in Moscow with a space dedicated to professionals of this branch, architects, interior designers and customers to brainstorm together in a design atmosphere.

VENICE
MOSCOW
NEW YORK
MIAMI

THE WORLD OF ATMOSPHERA

- VENICE
- MOSCOW
- NEW YORK
- MIAMI
- DUBAI
- NEW DELHI
- PARIS
- BRAZZAVILLE
- DUBAI
- NEW DELHI
- PARIS
- BRAZZAVILLE
- LAGOS
- ISTANBUL
- LUANDA
- PIJAD
- LONDON
- JEDDAH
- BEIJING
- MONTECARLO

VENICE STORE

Our showroom is situated at 30 km from Venice, adjacent to our headquarters. It's a space where you can see the set-up pieces of the collection but above all, like in the atelier of a tailor, you can see materials and creative ideas taking shape according to customer requirements. Therefore, it's the place that best describes us and

illustrates our approach to customer projects through the choice of products and materials to be introduced in their homes. The same concept has been applied in Moscow with a space dedicated to professionals of this branch, architects, interior designers and customers to brainstorm together in a design atmosphere.

CAPITAL

LUXURY INTERIORS

Luxury Interiors, precious materials and essential details.





CAPITAL

Capital began its story more than 40 years ago, thanks to its President Paolo Viscovich, and has since then accumulated experience in the luxury furniture sector.

Since its establishment the company is continuously evolving and growing in global markets as an organisation with Padua-based headquarters and showroom, but with offices and showrooms also in emerging markets.

DESIGN TAILOR MADE

Let's add up an adaptable design that meets different styles and moods.

The mix of materials, fabrics and finish is today the distinguishing element of the most exclusive settings: our aim is to add value to outdoor areas, giving them comfort and making them recognizable.

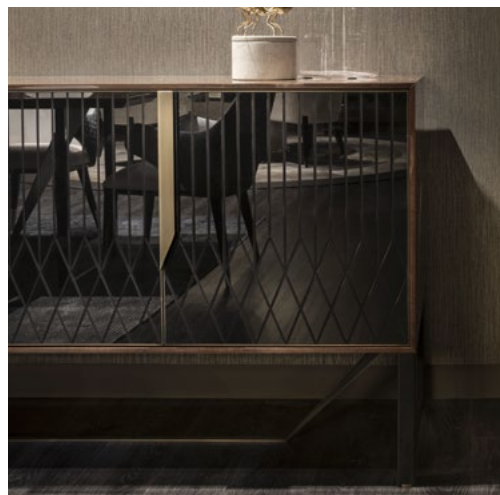


SPACE TO FURNISH

Find your product, the one that meet your expectations, your taste. Admire its shape, touch its forms, feel the sensations it conveys you. .

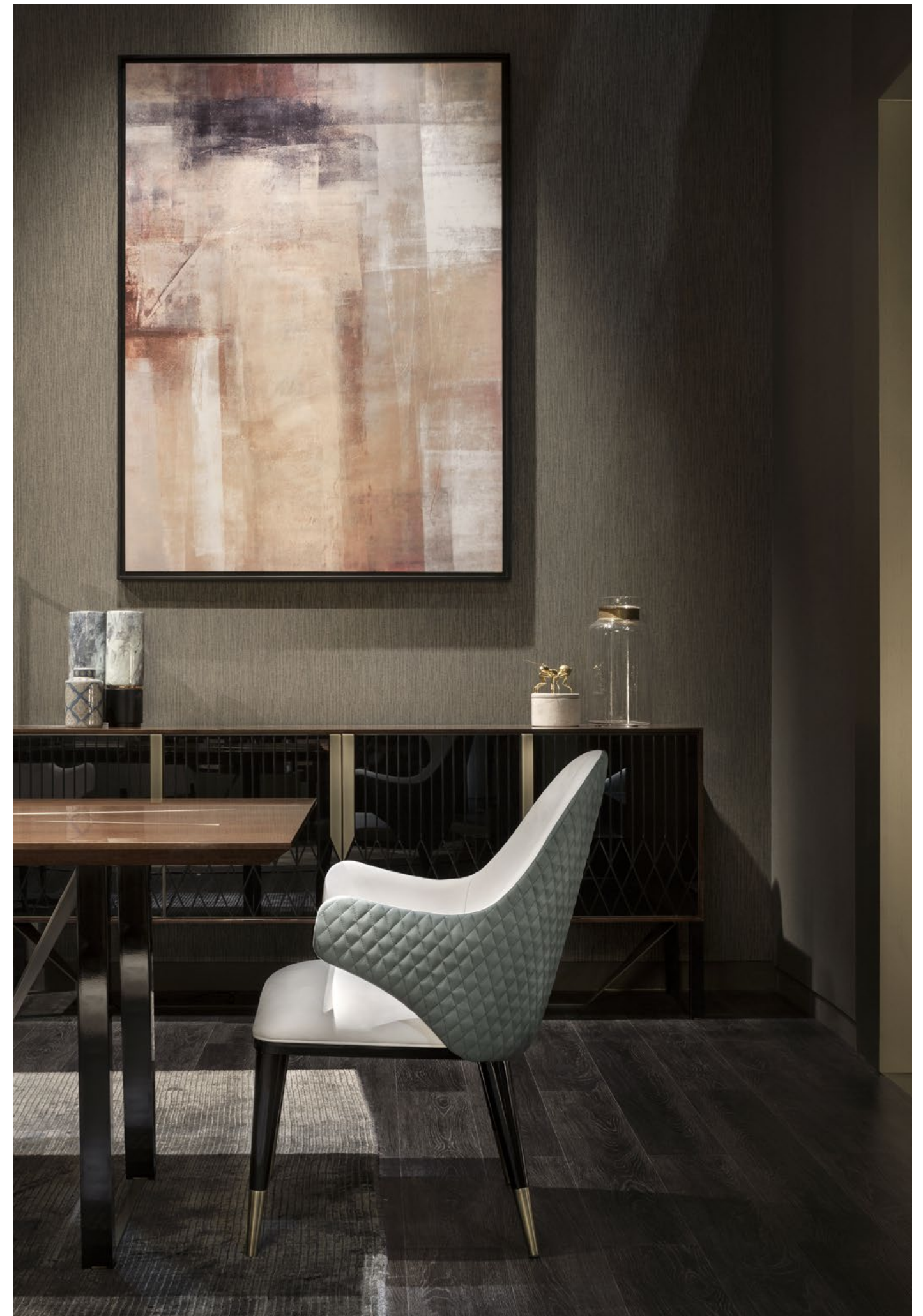
SELECT THE MATERIALS

Select wood, leathers, marbles, steels, fabrics end lacquers to customize yours furniture and spaces.



FIND YOUR PRODUCT

Find your product, the one that meet your expectations, your taste.





To ensure the highest quality of the rest: this is the purpose of the Capital beds collection, which combines the pursuit of the comfort with a constant aesthetic evolution. Abundant and soft volumes come together in a sober and essential design for a result of great effect. This bed of fascinating design comes out to be very versatile and satisfy all needs.



Designed by BOATTOMARTINO Studio



Designed by BOATTOMARTINO Studio



Prisma Collection, an evolution of geometric shapes inspired by precious stones. This Collection designed by BOATTOMARTINO Studio from Milan expresses a refined and contemporary luxury. The Madame chair finished tube quilted leather as a new interpretation of luxury and timeless elegance. Nature designed the elements from which we take inspiration. Capital products have an international style keeping the knowledge of tradition. We believe that the space you live express your personality; your aims, your ambition and your attitude.



Details make the difference to let interior become comfortable and precious. Allure sofa fills up the space giving the sensation of elegance and sophistication. Eclectic service table and Audrey armchair: create an unconventional and exclusive décor and describe perfectly the Capital look. Its contemporary design together with its eclecticism gives to the Audrey armchair a sophisticated and elegant character. The Eclectic service table, with its simple copper shapes goes along elegantly with Audrey armchair satisfying all needs.

Designed by BOATTOMARTINO Studio



Designed by BOATTOMARTINO Studio

Sophisticated and stylish, Diva armchair fills your spaces thank to its finely quilted diamonds. The refinement of colours and geometric lines of Prisma sideboard makes all your spaces very chic. The house is for us a performance of our soul, an always variable set-up of what we are and we would like to be. Doors with serigraph are the soul and connotative elements of the collection suitable for any location,

fitting all styles thanks to its minimal and sophisticated design, always careful to details. Fabrics and metals used are rigorously Made in Italy, just like the Know-how and advanced craftsmanship that leads to high class finish. Fabrics and metals used are rigorously Made in Italy, just like the Know-how and advanced craftsmanship that leads to high class finish.



Designed by CAPITAL COLLECTION Studio

The bookshelf as a design element stylistically defines the living area. Much more than a container for books alone, the bookshelf integrates with daily habits through a search of functionality within current lifestyles. Athena bookcase boasts an original shape made of simple lines.



ATMOSPHERA

SOUL OF OUTDOOR

To discover the relationship with nature. To conceive the external space as the real people-oriented space, where time and matter blend together in a unique dimension.





ATMOSPHERA

SOUL OF OUTDOOR

To discover the relationship with nature through direct experience and favored observation of environment. To conceive the external space as the real people-oriented space, where time and matter blend together in a unique dimension. The endless research of innovative solutions explores a lot of situations, complex markets and different cultures:

from the domestic environment to hospitality spaces, from wellness world to the care of public space in a professional environment. This is the design and productive challenge, that drives us in the development of our products and projects, in the study of suitable materials and in the care of productive details that make our products unique pieces. This is the philosophy that goes with our research of beauty and living well. This is our spirit, our soul of outdoor.



Designed by CAPITAL COLLECTION Studio



9.Zero is a modular combination of seats. The 9 modular bases are easy manufacturing so they can be composed in different solutions to satisfy the different requests of space and functions. The frames are made of nine slats each one is 9 cm made of polished and oiled Indonesian teak. The seat and back cushions are made of drained foam covered by outdoor fabrics of Atmosphaera Collection.



According to what has been declared by Dictionary Collegiate, Hipster is a young follower of all forms of alternative culture expressing his own dissatisfaction with the rules by recapturing behavioural and costume code of the second half of the century. We have evolved this inspiration into a product: Hipster Sofa. Which represents a contemporary and innovative concept, expressed in hybrid and mixed spaces such as verandas, covered terraces, porches and glazed rooms.



Designed by CAPITAL COLLECTION Studio



Designed by CAPITAL COLLECTION Studio

Maximum attention in the choice of materials, style and finishing. These are the key words that best describe the Twiga Set. Through colour games created by infinite fabric options, your spaces will be enriched with accessories designed for classy, romantic and timeless environments.

The Twiga shapes are hand-woven, made of a synthetic resin of high density extruded polyethylene. Material features are easy to clean, resistant to salt water, UV scratch protected, lightweight soft and recyclable. Thanks to its material features, Twiga Set can be used outside all over the year.



Designed by CAPITAL COLLECTION Studio

Harmony, serenity, reflection, the sunset transform our mind and light up any landscape. To relax and enjoy the sunshine we created Infinity sunbed. The sunbed aluminium frames are combined with hand-weave rope and they décor the space thanks to its Indonesian teak wood. Moreover the material is characterized by soft appeal similar to fabric textile, it is UV resistant and quick drying. These Sunbeds are able to satisfy every need and can be placed anywhere.

ATMOSPHERA CONTRACT

SOUL OF OUTDOOR

Contract division

The company deals with the realizations of contract projects as well, in particular the furnishings of hotel facilities such as rooms and halls, both in Italy and abroad. Among main references, we can name Oberoi Hotel, Falkensteiner and Sheraton Hotel.

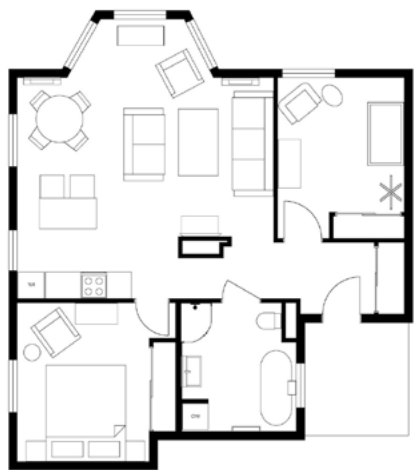
LAST REFERENCES 2016 - 2017

- | | |
|--------------------------------|--|
| Boscolo Hotel Exedra ROME | Falkensteiner Club Funimation Borik |
| Grand Hotel Fasano | Falkensteiner Hotel Am Schottenfeld |
| Marriot Hotel Airport Rome | Falkensteiner Hotel Maria Prag |
| Hotel Greif | Falkensteiner Hotel Bad Leonfelden |
| Hotel Iadera | Eurotherme Hotel Bad Schallerbach |
| Madina Oberoi Hotel | Novotel Linate |
| Swisshotel Duesseldorf Neuss | Mancini Park Hotel Rome |
| Hotel Bernini | Le Meridien Chia Laguna Resort and Spa |
| Sorat Hotel Messeturm Basel | Hotel Quellenhof |
| Hotel Jagdhof | Hotel Ribno |
| Les Meridien Hotel Lisbon | Hotel Terme Augustus |
| Les Meridien Hotel Minah Sehai | Hotel Terme Esplanade Tergesteo |
| Boscolo Hotel New York Palace | Hotel Savoy Palace |
| Hotel Intercontinental Geneve | Hotel Terme Cristoforo |



DESIGN
TAILOR MADE

Let's add up an adaptable design that meets different styles and moods.
The mix of materials, fabrics and finish is today the distinguishing element of the most exclusive settings: our aim is to add value to outdoor areas, giving them comfort and making them recognizable.



SPACE TO FURNISH

Find your product, the one that meet your expectations, your taste.
Admire its shape, touch its forms, feel the sensations it conveys you.

SELECT THE MATERIALS

Select wood, leathers, marbles, steels, fabrics end lacquers to customize yours furniture and spaces.



FIND YOUR PRODUCT

Find your product, the one that meet your expectations, your taste.



Hotel & SPA Iadera

Zadar, HR *****

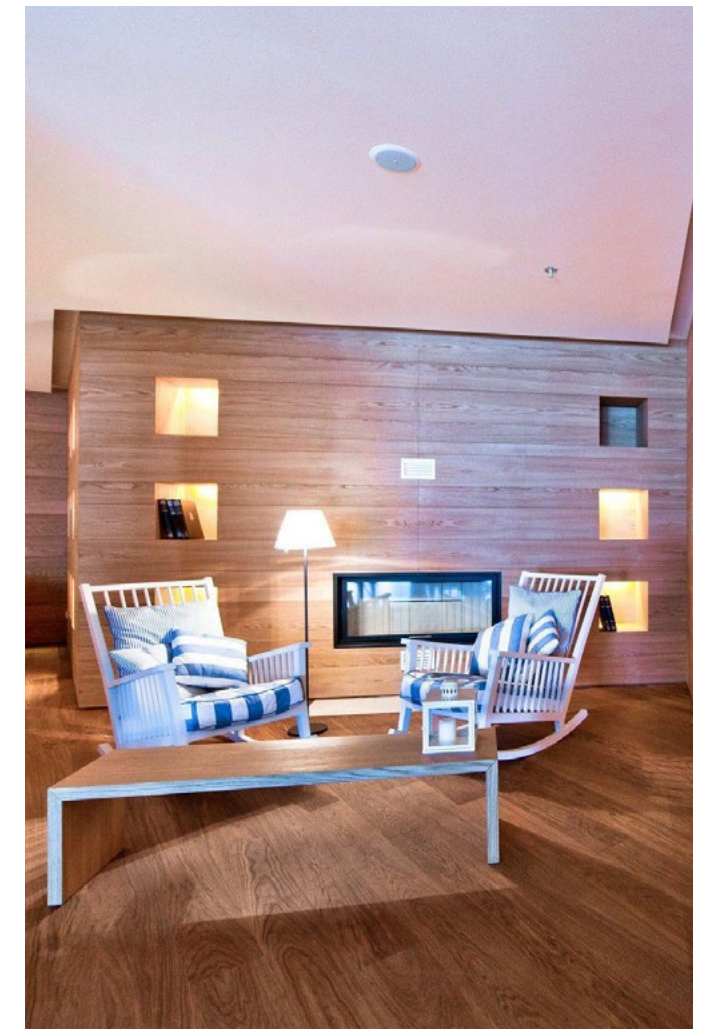
Falkensteiner
Hotel & Spa Iadera
Resort Punta Skala
HR-23231 Petrane - Zadar

Experience luxury with a Mediterranean flair on the Adriatic coast. Amazing interior and architectural design, breathtaking panoramic views and a wellness world in black & white make the Falkensteiner Hotel & Spa Iadera the best spa hotel in Croatia. The hotel is situated right next to the sea on the Punta Skala peninsula. Surrounded by the turquoise blue Adriatic sea, it is surely one of the most beautiful places in Croatia.





In this page: Halls and common areas produced according to the required design.
 Lounge Chair finiture: Teak wood together with satin stainless steel details. Twiga
 Service: Aluminium frames epoxy painted for outdoors. Mat in extruded polyethylene,
 water-proof, hand woven. Special Coffee Table: Solid Asian TEAK frames, with oil finish.

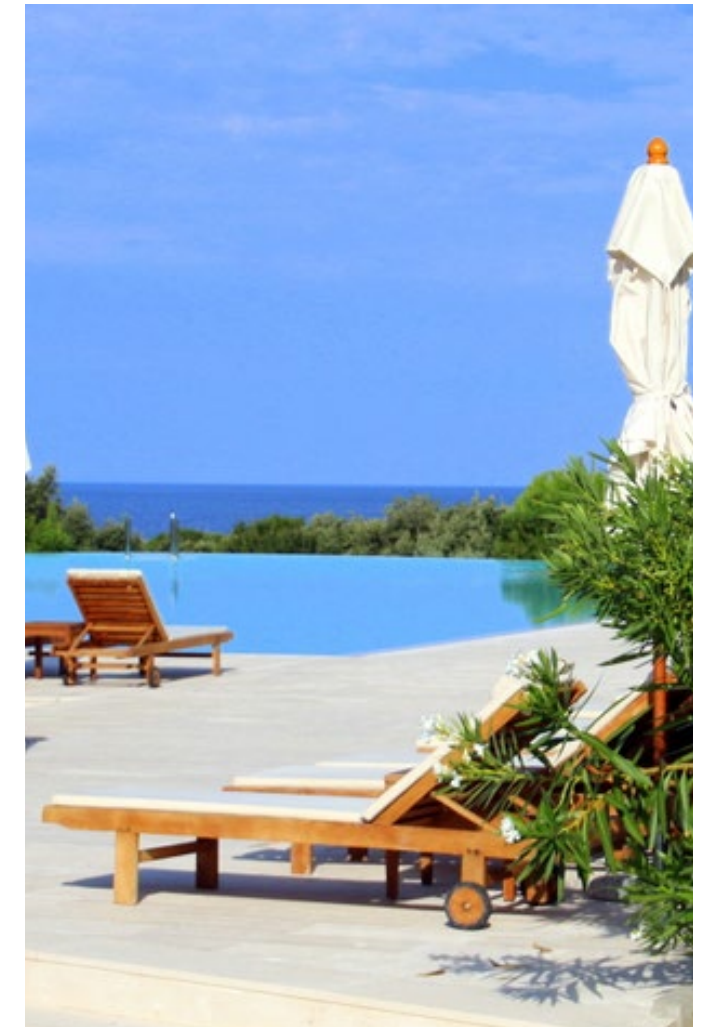




In this page: Special project, Dining Table: Solid Asian TEAK frame, with oil finish. Base and frame in 304 satin steel. Armchair: Solid Asian TEAK frames, with oil finish; details in brushed steel finish with white and blue cover.



This page: Special Project. Desert director armchair: Solid Asian TEAK frames, with oil finish; details in brushed steel finish. Seat and back in textilene fabric micro heat sealed white colour. Folding Chair. Table base: TEAK frames; details in brushed steel. Special Sofa: TEAK frames, with oil finish; details in brushed steel finish. Special Sunbed: TEAK frames. Backrest adjustable in 5 positions.





This page: Special Project. Dining Table: Solid Asian TEAK frame, with white laquered finish. Armchair: Solid Asian TEAK frames, with oil finish; details in brushed steel finish with white and blue cover. Sofa and pouf: Undeformable polyurethane foam padding of different densities. Metal legs. Special covering.





The previous page: Special Project. Bed Structure, bench, console and writing desk: Solid Asian TEAK frame, with white laquered finish. Armchair: Solid Asian TEAK frames, with oil finish; Dormeuse, sofa, armchair: Undeformable polyurethane foam padding of different densities. Special covering. In this page: Desert table base and Desert director armchair: Indonesian Teak wood and tempotest fabrics.

Hotel Zhero

Ischgl, Kappl AT *****

Wiese 687
6555 Kappl/Tirol
Österreich
info@zherohotelgroup.com

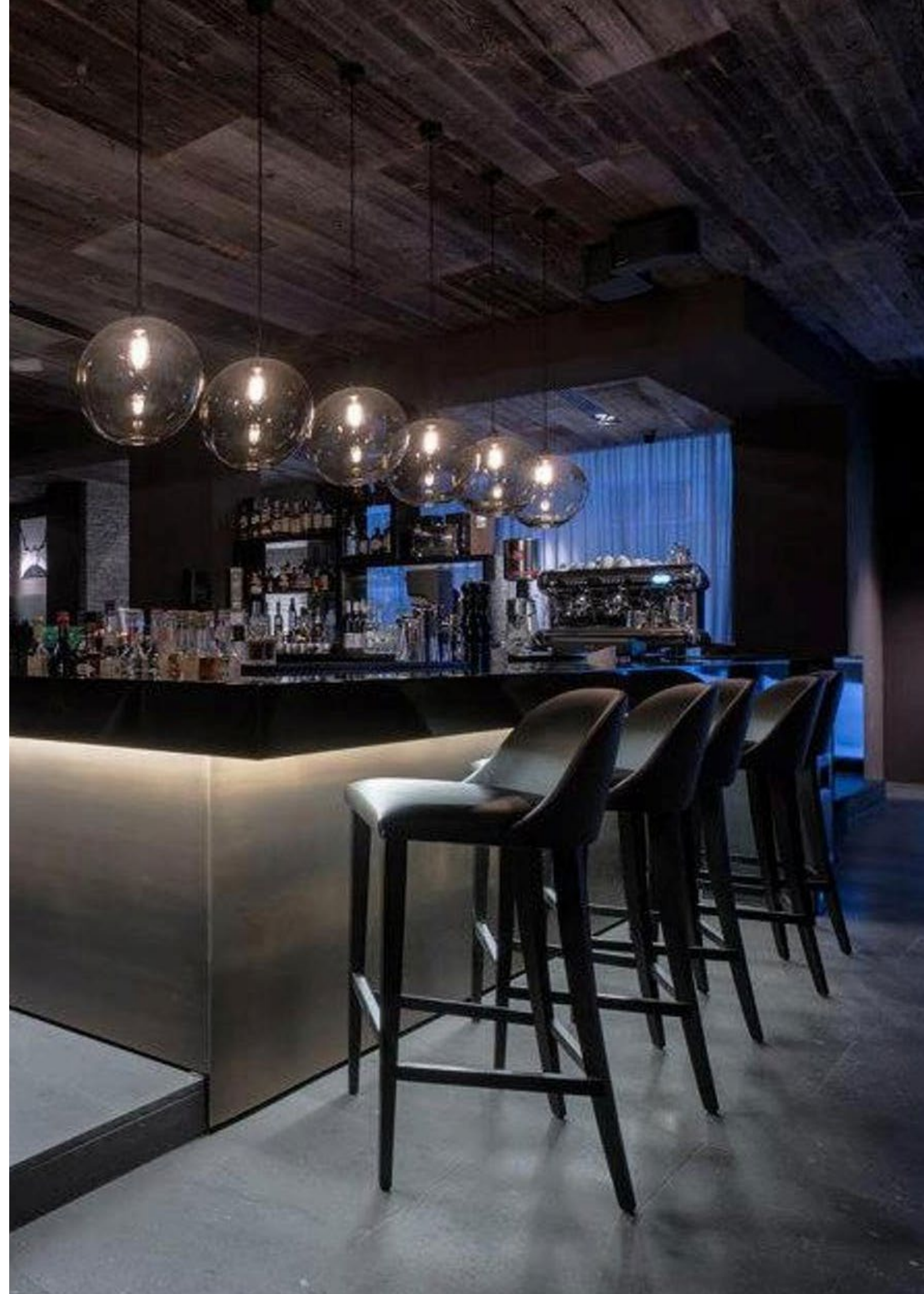
The Zhero Ischgl/Kappl will take your alpine holiday to another level. Whoever spends some time here will soon appreciate the benefits of the new hotspot in Paznaun Valley. With Ischgl right in the neighbourhood, you have all the possibilities the famous "place-to-be" offers, as well as the freedom to forego them.





In this page: Counter reception in lacquered wooden base. Armchair and sofa: Wooden basement. Steel details. Undeformable polyurethane foam padding of different densities. Covering can be choose cat. A | cat. B.

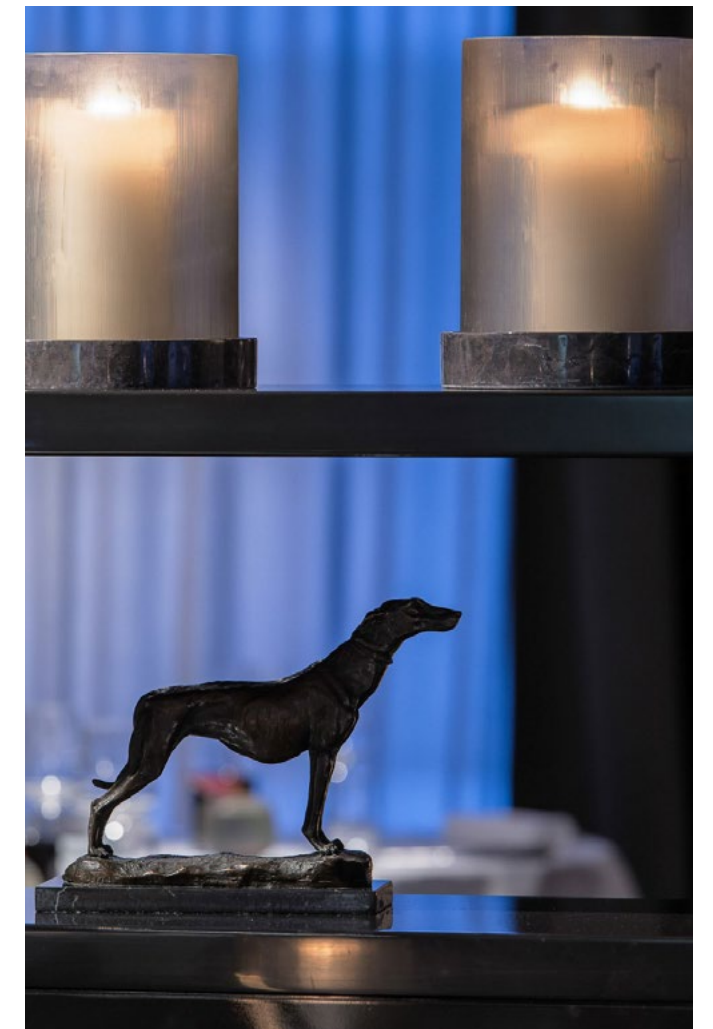




In this page: Armchair: Wooden basement. Steel details. Undeformable polyurethane foam padding of different densities. Covering can be choose cat. A | cat. B. Stool: Wooden basement. Undeformable polyurethane foam padding of different densities. Covering can be choose cat. A | cat. B. Counter bar: lacquered wooden top.



In this page: Armchair: Wooden basement. Undeformable polyurethane foam padding of different densities. Covering can be choose cat. A | cat. B





In this page: Armchair and sofa: Wooden basement. Undeformable polyurethane foam padding of different densities. Covering can be choose cat. A | cat. B Coffee Table: Steel legs. Tepered glass upper top. Marble down top.



In this page: Special project. Bed: Wooden frame. Undeformable polyurethane foam padding of different densities. Covering can be choose cat. A | cat. B. Bedside table: Wooden frame. Leather drawers. Optional essence top. Steel details. Three drawers. Chair and armchair: Wooden frame. Undeformable polyurethane foam padding of different densities. Writing Desk: Wooden top. One drawer.



Hotel Belgrade

Belgrado, SRB * * * * S

Falkensteiner
Hotel Belgrade
Bulevar Mihaila Pupina 10K
RS-11000 Belgrade

The 4 Star Superior hotel Belgrade designed by the star architect Boris Podrecca stands out for its futuristic facade, its welcoming atmosphere and its first class hotel facilities.

This new city hotel is located in the vibrant business and entertainment district of Belgrade. Close to the city centre and with a great connection to the airport, the hotel offers modern design, comfort, excellent service and a high level of functionality. A perfect place to stay whether you're visiting the booming metropolis in the Balkans for business, a conference or a sightseeing trip.





The previous page: Legs and details in steel. Wooden top. Armchair: Wooden frame. Undeformable polyurethane foam padding of different densities. Covering can be choose cat. A | cat. B. In this page: Wooden frame and steel details. Lacquered central base. Wooden top (optional). Sofa and armchair: Wooden frame and steel details. Undeformable polyurethane foam padding of different densities.



YACHT DESIGN

SOUL OF OUTDOOR

Yatch Design division

Great brands - those that make the history of lifestyle and design every day - do not belong to the companies that manage them but to the people who love them



DESIGN
TAILOR MADE

Let's add up an adaptable design that meets different styles and moods.
The mix of materials, fabrics and finish is today the distinguishing element of the most exclusive settings: our aim is to add value to outdoor areas, giving them comfort and making them recognizable.



YATCH #00

Find your space, the one that meet your expectations, your taste. Admire its shape, touch its forms, feel the sensations it conveys you. .

SELECT THE MATERIALS

Select wood, fabrics, weaving fibers and glass stone to customize yours furniture and spaces.



FIND YOUR PRODUCT

Find your product, the one that meet your expectations, your taste.



Yacht #01

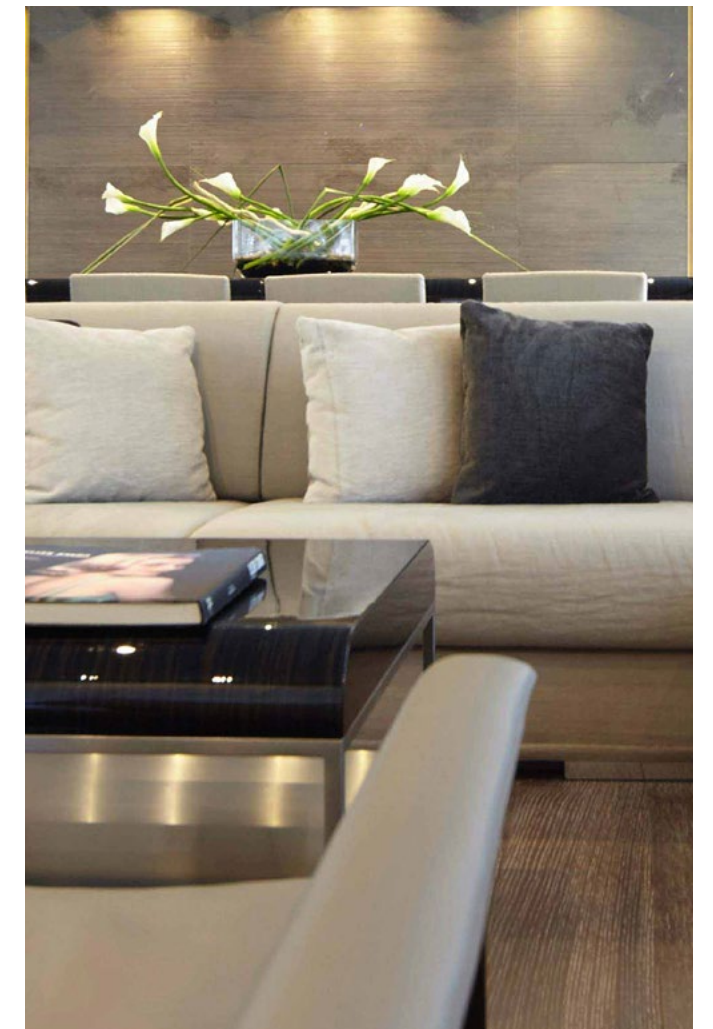
227ft

Grand Ocean's interior layout sleeps up to 12 guests in 7 rooms, including a master suite, 2 double cabins and 4 twin cabins. She is also capable of carrying up to 22 crew onboard to ensure a relaxed luxury yacht experience. Timeless styling, beautiful furnishings and sumptuous seating feature throughout to create an elegant and comfortable atmosphere.





In this page special project: Sofa armchair and decorative cushions: Wooden frame and steel details. Undeformable polyurethane foam padding of different densities. Coffee Table: Steel legs. Wooden or marble upper top.

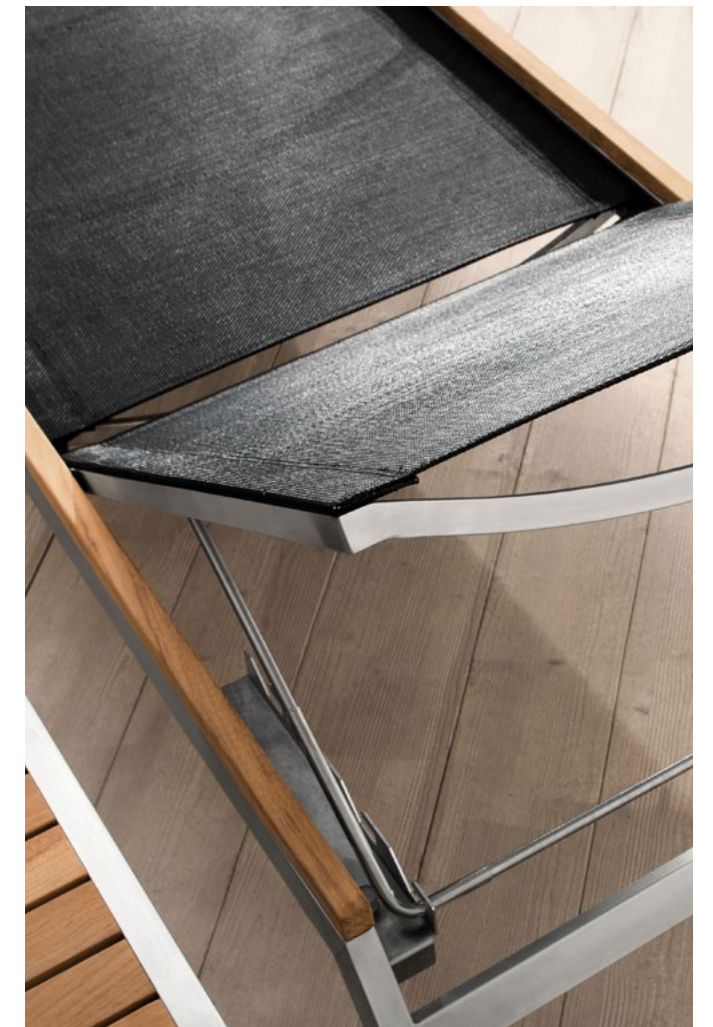


In this page: Sofa: Wooden frame and steel details. Undeformable polyurethane foam padding of different densities. Decorative cushions: 70x70; L 63 x H 21; L 45x H 35 in different fabrics.





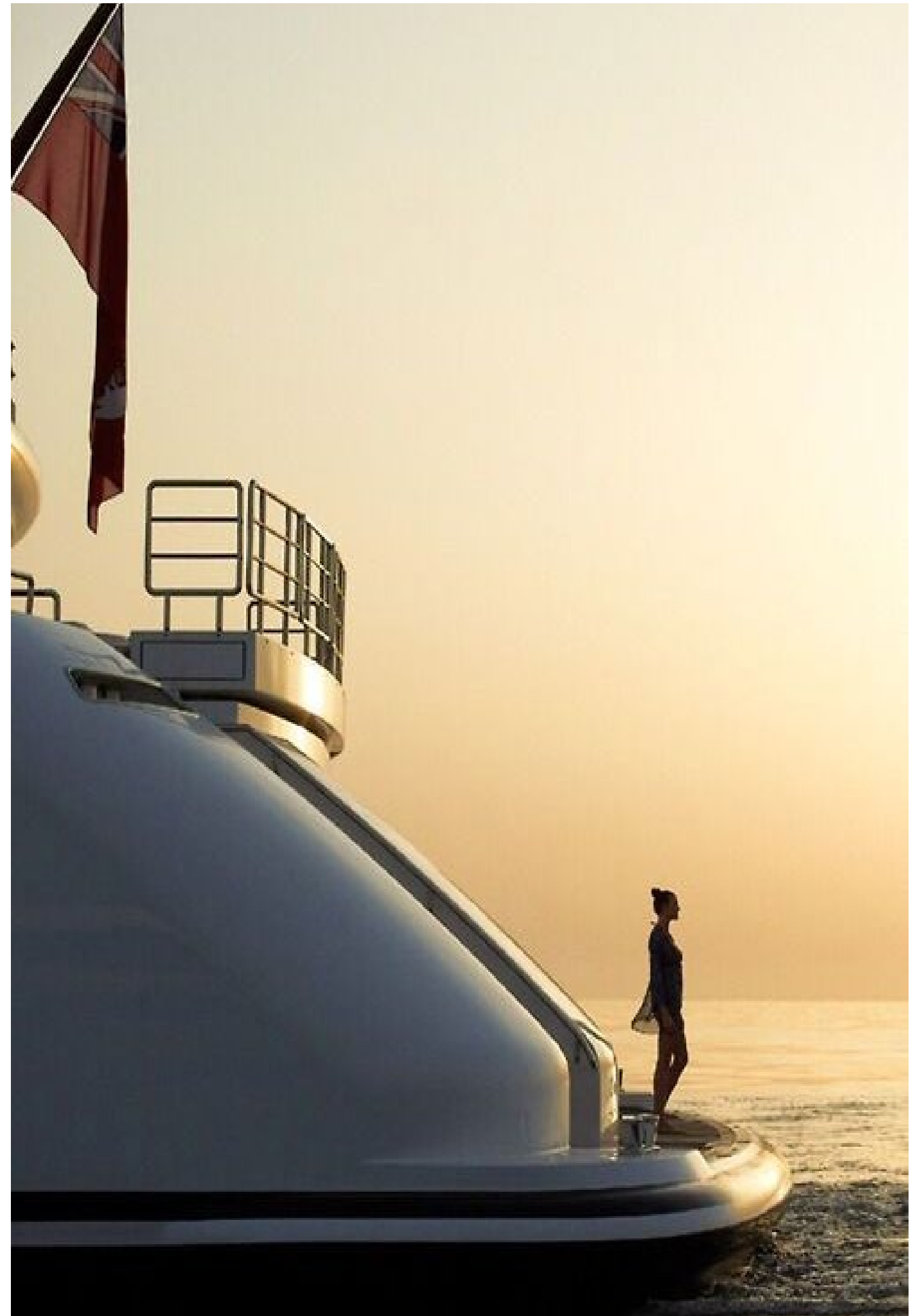
In this Page: Sunbed: Teak frames epoxy painted for outdoors. Seat and back in technical fabric micro heat sealed Textilene white for outdoors. Adjustable backrest; complete with No. 2 wheels. Service Table: Solid Asian TEAK Structures, with oil finish, details in brushed steel finish.



Yacht #02

177ft /55m

The new 55m superyacht is a custom-built yacht with 6 staterooms, featuring 2 king master suites (located on the main deck) and a VIP king guest suite below. Unique elements of the Newcastle 5500 superyacht include an infinity pool on the split level sundeck and a raised veranda on the main aft deck of the alfresco dining area.





In this page: Legend Dining Table: Solid Asian TEAK frames, with oil finish; details in brushed steel. Steel disc diam. 32 cm. Rarity armchair: 304 steel structure, details in solid asiatic TEAK. Seat and back are covered in technical fabric for outdoor use. Fusion Service Table: Structure in solid asian TEAK, with 304 steel base. 9.Zero Set: 9.zero is a modular seating system. The easy-to-build material of these 9 basic modules allows the realization of a large number of compositions to meet the various requirements of space and functionality.

Yacht #03

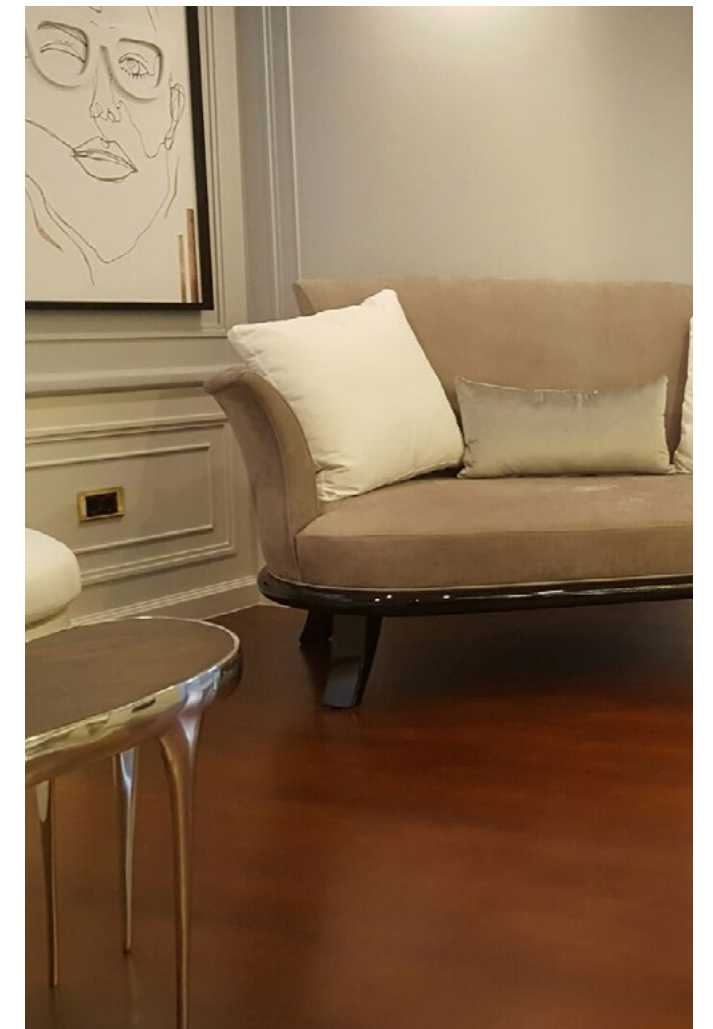
262.47ft /80m

Grand Ocean's interior layout sleeps up to 12 guests in 7 rooms, including a master suite, 2 double cabins and 4 twin cabins. She is also capable of carrying up to 22 crew onboard to ensure a relaxed luxury yacht experience. Timeless styling, beautiful furnishings and sumptuous seating feature throughout to create an elegant and comfortable atmosphere.





In this page: Passion armchair: Wooden basement. Undeformable polyurethane foam padding of different densities. Covering can be choose cat. A | cat. B. Kori sofa: Wooden basement. Undeformable polyurethane foam padding of different densities. Covering can be choose cat. A | cat. B.



Yacht #04

41.0ft /86m

Chakra's interior layout sleeps up to 40 guests in 21 rooms, including 2 master suites, 15 double cabins, 2 twin cabins and 2 single cabins. She is also capable of carrying up to 43 crew onboard to ensure a relaxed luxury yacht experience. Timeless styling, beautiful furnishings and sumptuous seating feature throughout to create an elegant and comfortable atmosphere.





In this page: Twiga armchair, Twiga Service Table and Globe armchair: Aluminium frames epoxy painted for outdoors. Mat in extruded polyethylene, water-proof, hand woven. Washable, light, soft, recyclable, resistant to water, salt, UV rays, snow and inclement weather.



PRESS DIVISION

SOUL OF OUTDOOR - CAPITAL
COLLECTION

www.atmospheraitaly.com

www.capitalcollection.it

Our company yearly plans marketing and communication actions in order to develop and improve all business areas involved. Atmosphera and Capital products can be found in specialized and furniture trading magazines sold in Europe, Russia and Eastern markets as well as in online sites addressed to the world of interior design and contract.

AD ARCHITECTURAL DIGEST

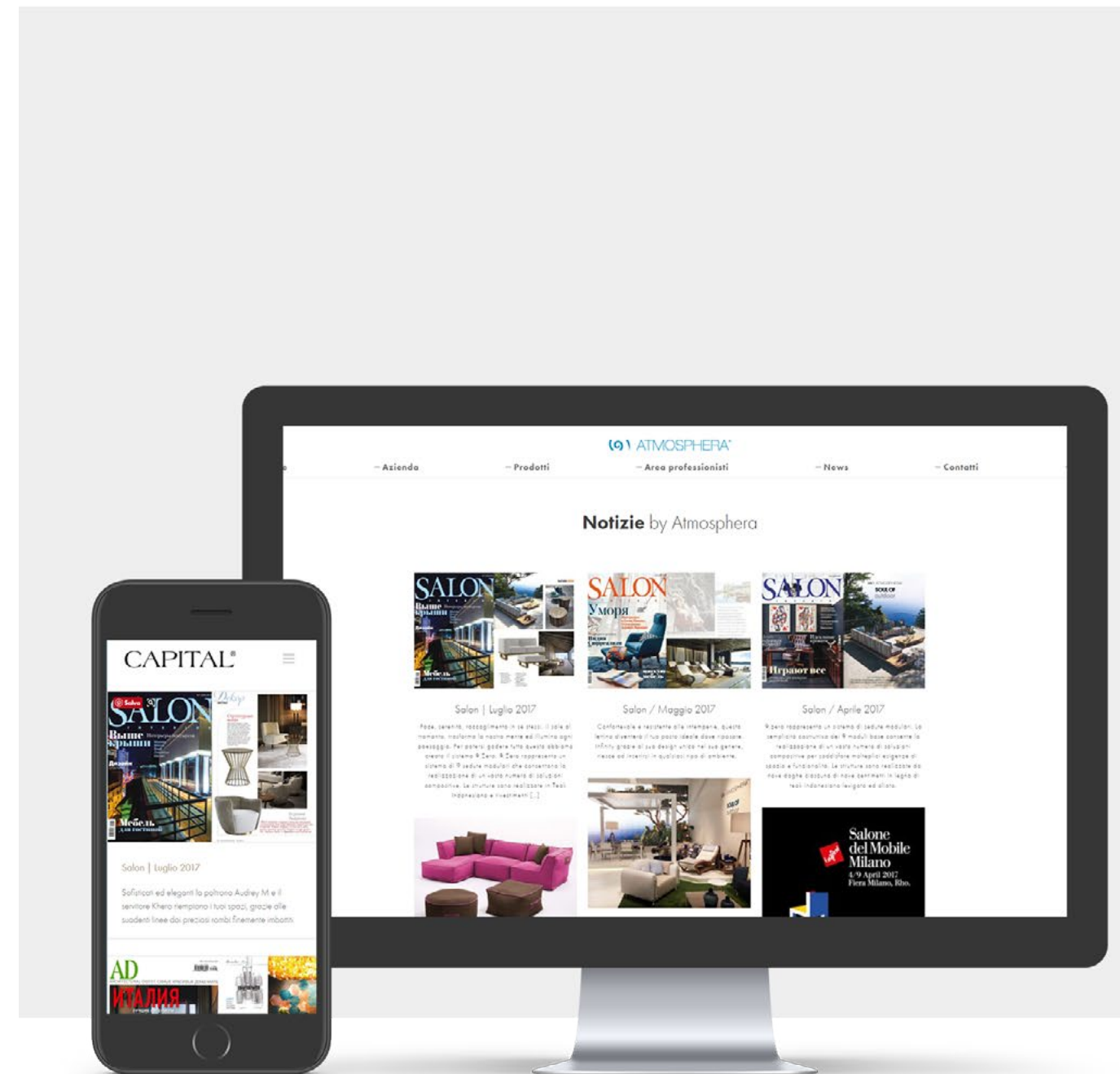
SALON

ELLE DECOR

IL FOGLIO DEL MOBILE

ARCHIPRODUCTS

360 RU





COMPANY DEPARTMENT

SALES OFFICE

Federico Viscovich

Sales Manager
fv@atmospheraitaly.com

Alberto Viscovich

Product and Project Manager
av@atmospheraitaly.com

Sabina Santarini

Sales Department
ss@atmospheraitaly.com

Nicoletta Varotto

Sales Department
nv@atmospheraitaly.com

MARKETING&DESIGN OFFICE

Alessandra Mosele

Design and marketing Department
am@atmospheraitaly.com

Ambra Schievano

Design and marketing Department
as@atmospheraitaly.com

COMPANY CONTACTS

ATMOSPHERA - CAPITAL

Via Cesare Battisti 68
35010 Limena, Padova, ITALY
T. +39 049 8657045
F. +39 049 8846984

Outdoor Collection
www.atmospheraitaly.com
info@atmospheraitaly.com

f Follow Us on Facebook Atmosfera Outdoor

Capital Luxury Interiors
www.capitalcollection.it
info@capitalcollection.it

f Follow Us on Facebook Capital Collection