

# FRANCIS



Pascal Arquitectos Design  
Tavolino da caffè. Struttura in metallo finitura Bronzo o Brandy. Top in listellare di pioppo italiano, spessore 4 cm, impiallacciato con legni Europei o esotici o laccato (da scala RAL), in finitura lucida o opaca.

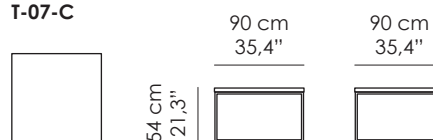
Pascal Arquitectos Design  
Coffee and Side Table. Base in metal, with Bronze or Brandy finish. Top in Italian poplar blockboard, 4 cm thickness, veneered with real European or exotic woods or lacquered (color from RAL chart), glossy or matt finish.

## Misure standard | Standard sizes

T-07-A



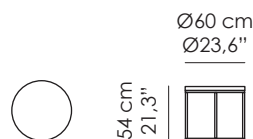
T-07-C



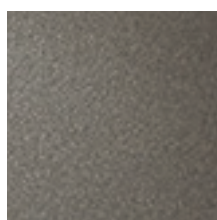
T-07-D



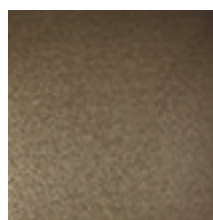
T-07-E



## Finiture standard BASE | Standard finishes BASE



VBRO | Verniciato Bronzo  
Bronze Finish



VBRA | Verniciato Brandy  
Brandy Finish

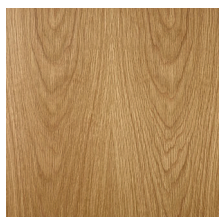
100% made in Italy

[www.bellavistacollection.com](http://www.bellavistacollection.com)

# FRANCIS

---

## Finiture standard TOP | *Standard finishes TOP*



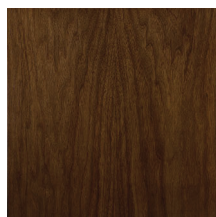
RN | Rovere Naturale  
*Natural Oak*



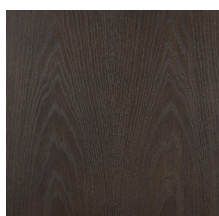
NC | Noce Canaletto Naturale  
*Natural American Walnut*



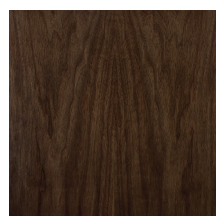
RS | Rovere Smoke  
*Smoke Oak*



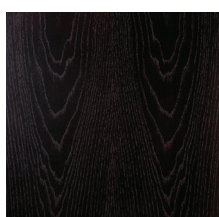
NCS | Noce Canaletto Scuro  
*Dark American Walnut*



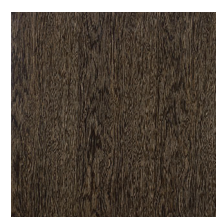
RG | Rovere Grigio  
*Grey Oak*



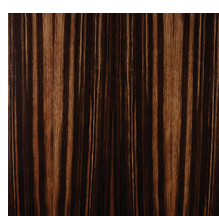
NCM | Noce Canaletto Moka  
*Moka American Walnut*



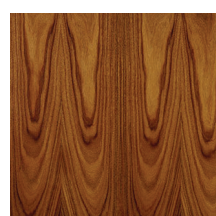
RM | Rovere Moka  
*Moka Oak*



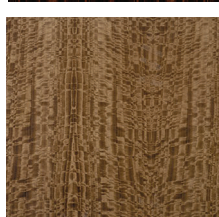
SG | Sucupira Grigio  
*Grey Sukupira*



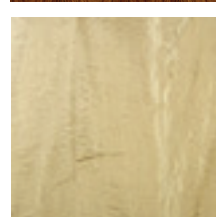
E | Ebanò  
*Ebony*



P | Palissandro  
*Rosewood*



EFS | Eucalipto Friseé scuro  
*Dark Eucalyptus frisee*



SY | Sicomoro Naturale  
*Natural Sycamore*



Laccato RAL  
*Lacquered from RAL chart*