

# FRANC PAULIN

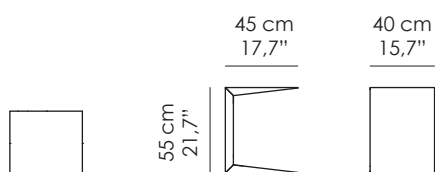


Tavolino. Struttura interna in metallo piegato, rivestita in cuoio, cuciture tono su tono.

Side Table. Inner structure in folded metal, clad-ded with saddle-leather, matching stitches.



## Misure standard | Standard sizes



100% made in Italy

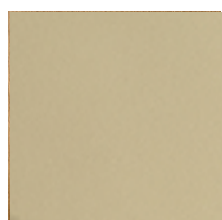
[www.bellavistacollection.com](http://www.bellavistacollection.com)

BELLAVISTA<sup>®</sup>  
COLLECTION

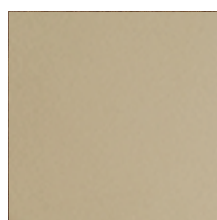
# FRANC PAULIN

---

## Finiture standard | *Standard finishes*



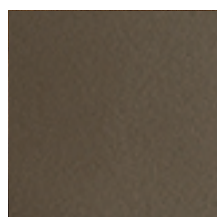
CU | Cuoio  
Saddle Leather  
AVORIO



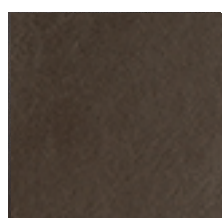
CU | Cuoio  
Saddle Leather  
SAND



CU | Cuoio  
Saddle Leather  
TAUPE



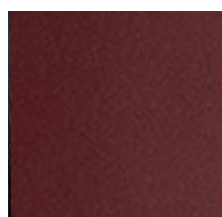
CU | Cuoio  
Saddle Leather  
FANGO



CU | Cuoio  
Saddle Leather  
TABACCO



CU | Cuoio  
Saddle Leather  
ROSSO



CU | Cuoio  
Saddle Leather  
BORDEAUX