

# Mia S M CU Chair

design Beatriz Sempere

Chair with sled base in steel. Hide seat.



## Colors and Materials

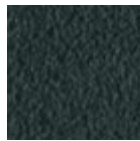
### Structure



White Steel



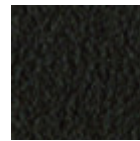
Sand Steel



Grafite Steel



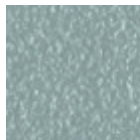
Black Steel



Brown Steel



Pastel Yellow Steel



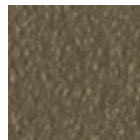
Light blue steel



Ocean Blue Steel



Bronze Steel



Fango Steel



Light Grey Steel



Ocher Steel



Facepowder Pink Steel



Red steel



Sage Green Steel



Pink Gold



Black Nickel

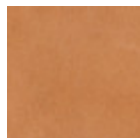
### Coating



Hide  
20 Colors



TK Hide  
9 Colors



Tuscan Hide  
3 Colors

## Dimensions

## Volumetric Details

**Weight** 8 Kg

**Volume** 0.33 mc

**Package** 1

Image not found or type unknown

	cm	inch
<b>A</b>	97	38.2
<b>B</b>	50	19.7
<b>C</b>	55	21.7
<b>D</b>	46	18.1

## Downloads

[3D Mia \(zip\)](https://www.midj.com/images/uploads/resources/midj-mia-3d.zip) - <https://www.midj.com/images/uploads/resources/midj-mia-3d.zip>

## Materials Certifications

### Hide

#### FIRE RESISTANCE:

Technical Bulletin 117/00 sez E part. 1

EN 1021 parte 1/94, parte 2/94

BS 5852/90

#### PROPRIETIES AND ADVANTAGES

The hide is a hygienic and very practical product: it resists to wear, it's impermeable to water but, at the same time, the hide wicks air and sweat. The hide is obtained from the skin of bovines breeds and slaughtered for food purposes and subsequently treated with chromium salts.

#### CLEANING INSTRUCTIONS

Use only a damp, non abrasive cloth; do not use products containing solvents or alcohol that may damage the surface. It is advisable to test an invisible area of the product before cleaning it all. For good preservation of the product purchased, it is inadvisable to expose it to direct sunlight that may alter its features and colours. Any surface imperfections are natural features of hide and guarantee that it is an original product.

## Materials Certifications

### TK Hide

#### PROPRIETIES AND ADVANTAGES

The hide is a hygienic and very practical product: it resists to wear, it's impermeable to water but, at the same time, the hide wicks air and sweat. The hide is obtained from the skin of bovines breeds and slaughtered for food purposes and subsequently treated with chromium salts.

#### CLEANING INSTRUCTIONS

Use only a damp, non abrasive cloth; do not use products containing solvents or alcohol that may damage the surface. It is advisable to test an invisible area of the product before cleaning it all. For good preservation of the product purchased, it is inadvisable to expose it to direct sunlight that may alter its features and colours. Any surface imperfections are natural features of hide and guarantee that it is an original product.

## Materials Certifications

### Tuscan Hide

Tuscan Hide does not fear to get aged since the oldest it gets the more unique it becomes.

It is a material deriving from animal's leather which suffer a process called "vegetable tanning" with natural tannins and with the help of some products biologically compatible whether for the dyeing or for the finishing.

Any possible imperfection, sign, scar, stain of the Tuscan hide surface are a natural characteristics which

guarantees its originality.