

Apelle TREE

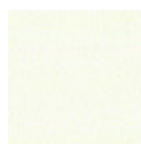
design Beatriz Sempere, 2013

Coat hanger in lacquered steel. The base is in lacquered steel on the same color as the column for white and black versions. The pink gold version has the base upostered in hide matching with the support in hide.



Colors and Materials

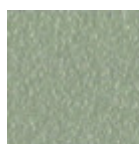
Structure



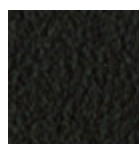
White Steel



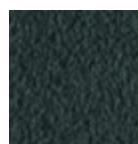
Black Steel



Sand Steel



Brown Steel



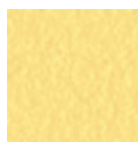
Grafite Steel



Fango Steel



Bronze Steel



Pastel Yellow Steel



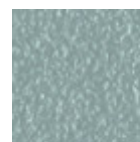
Ocher Steel



Red steel



Sage Green Steel



Light blue steel



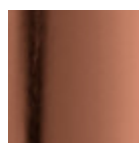
Ocean Blue Steel



Light Grey Steel



Facepowder Pink
Steel



Pink Gold



Black Nickel



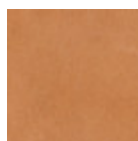
Golden Bronze

Coating



TK Hide

9 Colors



Tuscan Hide

3 Colors

Dimensions

Volumetric Details

Weight 9 Kg
Volume 0.06 mc
Package 2

Image not found or type unknown

	cm	inch
A	178	70.1
B	35	13.8
C	36	14.2

Downloads

- [Apelle catalog \(pdf\)](https://www.midj.com/images/uploads/resources/apelle-catalogo-2017.pdf) - <https://www.midj.com/images/uploads/resources/apelle-catalogo-2017.pdf>
[3ds Apelle Tree \(zip\)](https://www.midj.com/images/uploads/resources/3ds-midj-apelle-tree.zip) - <https://www.midj.com/images/uploads/resources/3ds-midj-apelle-tree.zip>
[3D Autocad Apelle Tree \(zip\)](https://www.midj.com/images/uploads/resources/3d-midj-apelle-tree-cad.zip) - <https://www.midj.com/images/uploads/resources/3d-midj-apelle-tree-cad.zip>
[3D pCon Planner Apelle Tree \(zip\)](https://www.midj.com/images/uploads/resources/3d-midj-apelle-tree-pcon.zip) - <https://www.midj.com/images/uploads/resources/3d-midj-apelle-tree-pcon.zip>
[3D SketchUp Apelle Tree \(zip\)](https://www.midj.com/images/uploads/resources/3d-midj-apelle-tree-sketchup.zip) - <https://www.midj.com/images/uploads/resources/3d-midj-apelle-tree-sketchup.zip>
[3D obj Apelle Tree \(zip\)](https://www.midj.com/images/uploads/resources/3d-midj-apelle-tree-obj.zip) - <https://www.midj.com/images/uploads/resources/3d-midj-apelle-tree-obj.zip>

Materials Certifications

TK Hide

PROPRIETIES AND ADVANTAGES

The hide is a hygienic and very practical product: it resists to wear, it's impermeable to water but, at the same time, the hide wicks air and sweat. The hide is obtained from the skin of bovines breeds and slaughtered for food purposes and subsequently treated with chromium salts.

CLEANING INSTRUCTIONS

Use only a damp, non abrasive cloth; do not use products containing solvents or alcohol that may damage the surface. It is advisable to test an invisible area of the product before cleaning it all. For good preservation of the product purchased, it is inadvisable to expose it to direct sunlight that may alter its features and colours. Any surface imperfections are natural features of hide and guarantee that it is an original product.

Materials Certifications

Tuscan Hide

Tuscan Hide does not fear to get aged since the oldest it gets the more unique it becomes. It is a material deriving from animal's leather which suffer a process called "vegetable tanning" with natural tannins and with the help of some products biologically compatible whether for the dyeing or for the finishing.

Any possible imperfection, sign, scar, stain of the Tuscan hide surface are a natural characteristics which guarantees its originality.