



# Ola Bench BN M Lounge Armchair

design Paolo Vernier, 2016

Ola, two seats bench in lacquered steel or industrial effect. Suitable for outdoor use.



## Colors and Materials

### Structure



White Steel



Black Steel



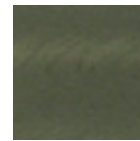
Sand Steel



Brown Steel



Grafite Steel



Industrial Steel

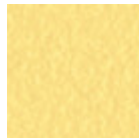
1 color



Fango Steel



Bronze Steel



Pastel Yellow Steel



Ocher Steel



Red steel



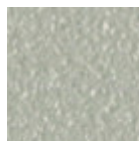
Sage Green Steel



Light blue steel



Ocean Blue Steel

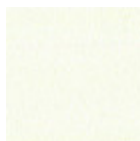


Light Grey Steel

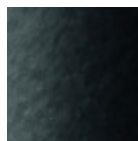


Facepowder Pink Steel

### Coating



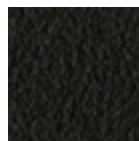
White Steel



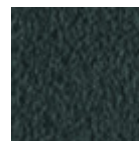
Black Steel



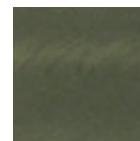
Sand Steel



Brown Steel

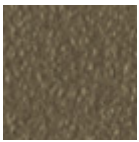


Grafite Steel



Industrial Steel

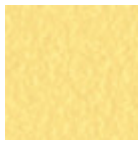
1 color



Fango Steel



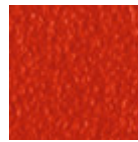
Bronze Steel



Pastel Yellow Steel



Ocher Steel



Red steel



Sage Green Steel



Light blue steel



Ocean Blue Steel



Light Grey Steel



Facepowder Pink Steel

## Dimensions

Dimensions

## Volumetric Details

**Weight** 14 Kg

**Volume** 0.56 mc

**Package** 1

Image not found or type unknown

	cm	inch
<b>A</b>	82	32.3
<b>B</b>	114	44.9
<b>C</b>	56	22.1
<b>D</b>	46	18.1
<b>E</b>	65	25.6