



Raff S M BD_T Chair

design Area 44, 2012

Stackable chair with sled base in chrome or lacquered steel. Shell available in Baydur®.

Suitable for outdoor use.



Colors and Materials

Structure



White Steel



Black Steel



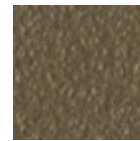
Sand Steel



Brown Steel



Grafite Steel



Fango Steel



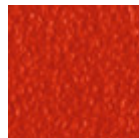
Bronze Steel



Pastel Yellow Steel



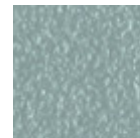
Ocher Steel



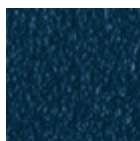
Red steel



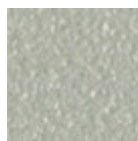
Sage Green Steel



Light blue steel



Ocean Blue Steel



Light Grey Steel



Facepowder Pink Steel



Chrome

Coating



Baydur

3 Colors

Dimensions

Volumetric Details

Weight 7 Kg

Volume 0.34 mc

Package 1

Image not found or type unknown

	cm	inch
A	86	33.9
B	60	23.6
C	56	22.1
D	47	18.5

Downloads

[3D Raff T \(zip\)](https://www.midj.com/images/uploads/resources/raff-t-3d.zip) - <https://www.midj.com/images/uploads/resources/raff-t-3d.zip>