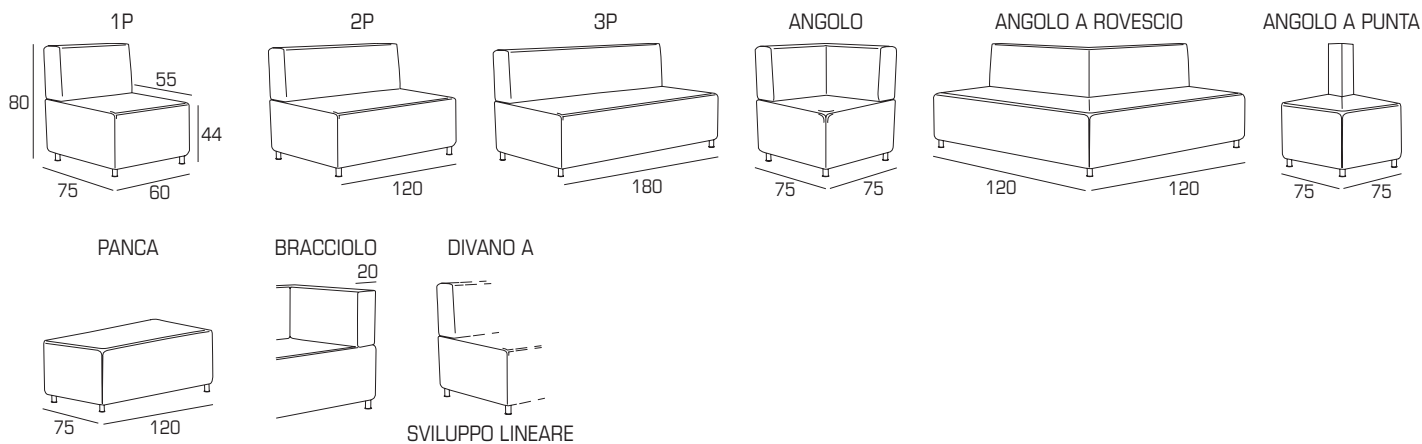
**MATERIALI:**

- 1 - fibra di dacron® 100 gr;
- 2 - poliuretano espanso indeformabile di diverse densità;
- 3 - telaio in multistrato di legno di abete;
- 4 - piedi in tubolare metallico cromato;
- 5 - piana in multistrato di legno.

PLUTO COLLECTION:**PIEDI:**

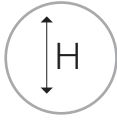
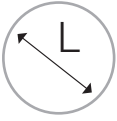
h 7



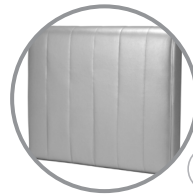
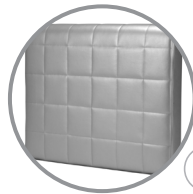
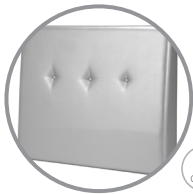
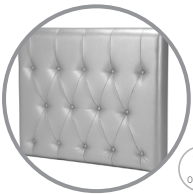
1IM

PLUTO

PERSONALIZZAZIONI:

sviluppo
linearealtezza
variabilerivestimento
personalizzabile

FINITURE SCHIENALI:



INFORMAZIONI TECNICHE:

Sfoderabile: NO

kg

m³

mts

kg

m³

mts

PLUTO 1P

27

0.36

2.00

PLUTO ANGOLO A PUNTA

30

0.42

3.10

PLUTO 2P

54

0.72

4.00

PLUTO BRACCIOLO

/

0.06

1.00

PLUTO 3P

81

1.08

6.00

PLUTO ANGOLO RETTO

38

0.45

3.10

PLUTO DIV. SV. LINEARE

45

0.60

3.10x1 mtl

PLUTO ANGOLO A ROVESCIO

100

1.16

8.50