

Pacific Chair

Edward Barber & Jay Osgerby, 2016

vitra.



Pacific Chair

Development of the Pacific Chair followed the guiding principle 'full performance, quiet design' and achieved a harmonious combination of these two characteristics. The individual, high-quality components have a consistent design language, lending the Pacific Chair expressive clarity and precision. Its appearance is strongly defined by the backrest, which extends so far down that no mechanical components are visible from behind, with the exception of the base. With its linear silhouette and understated design, the chair is an ideal addition to any contemporary interior.

Although not readily visible, the Pacific Chair offers all the sophisticated functions necessary for ergonomic seating. The height-adjustable back and armrests form part of the same vertically aligned profile. This is a decisive feature of the overall design concept and allows users to sit sideways. The synchronised mechanism automatically responds to the weight of the respective user, offering an immediate sense of personalised comfort. Further fine adjustments can be carried out quickly and easily thanks to the concealed but intuitively positioned operating elements.

The padded backrest comes in three different heights; components are colour-coordinated in light or dark versions, available with matching functional armrests or elegant aluminium arm supports.

Materials

- **Office swivel chair in accordance with EN 1335; height-adjustable or 3D armrests with Ergonomic Seal of Approval.**
- **Seat mechanism:** ProMotion mechanism, lockable in upright position. Synchronised mechanism with automatic weight adjustment and manual fine tuning of backrest resistance with five settings. Equipped as standard with seat height and seat depth adjustment. Optionally available with or without spontaneous forward tilt (can be disabled). Aluminium casing for seat mechanism, sandblasted or powder-coated (deep black) depending on the frame colour selected. Control lever on seat mechanism always made of polyamide in deep black.

- **Back:** upholstered backrest. Six adjustable height settings. Upholstered backrest made of polyamide with polyurethane foam padding. Available in 3 heights: low (conference height), medium and high. Cover in fabric or leather. High backrest equipped with height-adjustable headrest covered in leather.
- **Seat:** polyurethane foam padding. Seat support in polyamide (deep black). Seat cover in fabric or leather.
- **Armrests:** height-adjustable armrests or 3D armrests with adjustable height, width and depth. Armrest sleeve and operating element in polyamide (deep black or soft grey, depending on the frame colour selected). With soft polyurethane pads (in deep black or dark grey, depending on the frame colour selected). Also available with fixed armrests in die-cast aluminium for conference settings, polished or powder-coated (deep black) depending on the frame colour selected, optional leather pads. Armrest supports in die-cast aluminium, either polished or powder-coated (deep black) depending on the frame colour selected.
- **Base:** five-star base in die-cast aluminium, with a polished finish or powder-coated (deep black), or alternately made of polyamide (deep black); equipped with double castors (Ø 60 mm).

1 Pacific Chair
2-4 Various fields of use

5 Functions
6-7 Aesthetic restraint
for interior spaces

8-13 Cover material
14-15 Dimensions

Despite its understated design, the Pacific Chair has an unmistakable linear silhouette. The backrest extends downwards to conceal mechanical elements, while the armrests form an integral part of the chairback; visible components are, therefore, reduced to a minimum. The overall effect is one of unassuming serenity.

The high-quality structural components are available in colour-coordinated versions, making it possible to mix and match different chair configurations in one setting without any hint of chaos. The Pacific Chair blends in perfectly with the architecture and interior design of contemporary office environments.



Pacific Chair with low upholstered backrest

Conference areas and hybrid zones
The Pacific Chair with a low upholstered backrest displays extreme aesthetic restraint. It is a perfect choice for meeting and conference areas as well as hybrid zones, offering comfortable seating for temporary users.

Pacific Chair with medium upholstered backrest

Workstations
The medium-height backrest provides comfortable lumbar support, even over prolonged periods of sitting – and also emanates linear simplicity. The back extends so far down that no mechanical components are visible from behind. This makes for a serene and tidy picture even in large office interiors.



Pacific Chair with high upholstered backrest and headrest

Executive office

When equipped with a high backrest and adjustable neck cushion, the Pacific Chair offers additional support in the upper spine. Its understated design has a distinguished aura and is therefore perfectly adapted to office environments with a progressive corporate culture and a transparent structure.

People have a natural urge to move – even when sitting. Ideally, an office swivel chair should not just offer freedom of movement but also promote dynamic sitting. To do this, the chair must be correctly adjusted.





The light frame colour gives the Pacific Chair an inviting appeal.



Selected with a dark frame colour, the chair exudes a young, modern look.



The 'mixed' colour combination lends the Pacific Chair a touch of classical elegance.



Edward Barber & Jay Osgerby

Edward Barber and Jay Osgerby studied architecture together at the Royal College of Art in London. Since that time, they have been working together on the interface between design, furniture design and architecture.




03
aluminium
polished




53
soft grey



03
aluminium
polished



12
deep black




12
deep black



12
deep black



12
deep black
powder-coated
(smooth)



12
deep black
powder-coated
(smooth)



53
soft grey

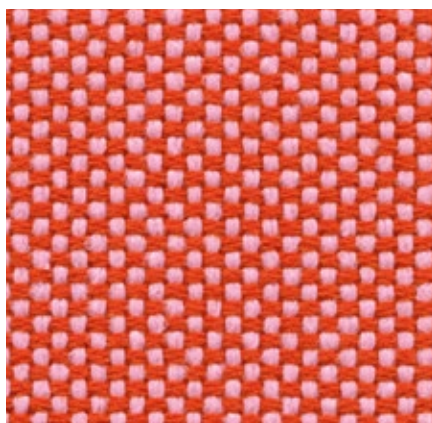
Armrests

Base

Clothes hanger

Laser Home/Office, F30

vitra.



With its distinctive woven structure, Laser makes a robust and striking cover fabric. The varied palette offers a wide selection of colours, with the duotones showing off the woven structure to even greater advantage. Practical and easy to care for, as well as durable and highly abrasion-resistant, Laser is also well suited for office environments.

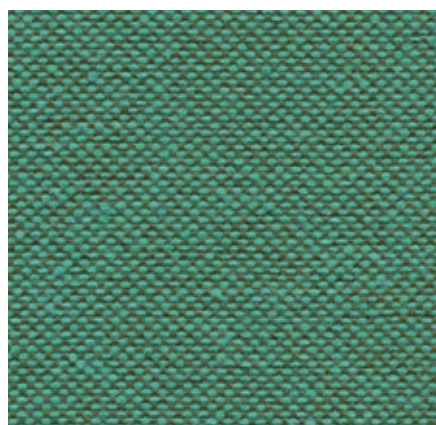
Laser is available in 35 colours.

Material	100% polyester
Weight	520 g/m ² (15.3 oz/y ²)
Width	145 cm +/- 2 cm (57")
Abrasion resistance	40,000 Martindale
Fastness to light	Type 6
Pilling	Grade 4-5
Fastness to rubbing	Grade 4-5 dry and wet



Plano Home/Office, F30

vitra.



Plano is a robust plain weave with a flat, even texture. The wide palette of duotones with new, delicate washed-out shades includes many relatively neutral hues, a good number of which are coordinated with the Hopsak colour range. Thanks to its durability and longevity, Plano is also an ideal choice for office furnishings.

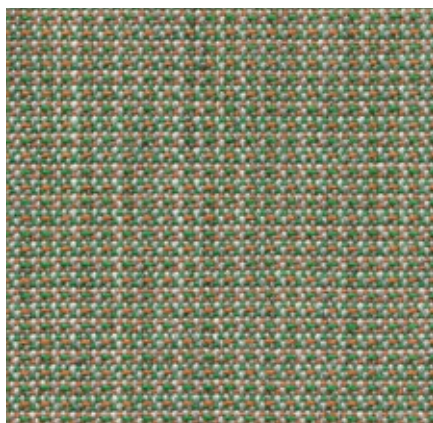
Plano is available in 39 colours.

Material	100% polyester
Weight	265 g/m ² (7.8 oz/y ²)
Width	142 cm +/- 2 cm (56")
Abrasion resistance	80,000 Martindale
Fastness to light	Type 6
Pilling	Grade 4-5
Fastness to rubbing	Grade 4-5 dry and wet

 05 cream white/ sierra grey	 34 grass green/ forest	 40 coconut/forest	 81 blue/coconut	 19 sierra grey	 73 nero/coconut
 18 light grey/sierra grey	 61 classic green/ cognac	 52 mint/forest	 13 nero/ice blue	 74 sierra grey/nero	 66 nero
 39 yellow/pastel green	 41 classic green/ forest	 43 petrol/nero	 86 dark blue/brown	 69 dark grey	 54 brown
 68 avocado	 17 forest/sierra grey	 12 light grey/ice blue	 87 nero/cream white	 62 dark grey/nero	 75 marron/nero
 11 marron/cognac	 72 poppy red	 84 poppy red/ champagne			
 67 cognac	 07 orange	 15 pink/sierra grey	 99 cognac/parch- ment		
 98 dark red/nero	 96 red/cognac	 16 dark red/ice blue	 20 tobacco/cream white		
 97 red/coconut	 63 red/poppy red	 80 coffee	 03 parchment/ cream white		

Tress Home/Office, F6o

vitra.



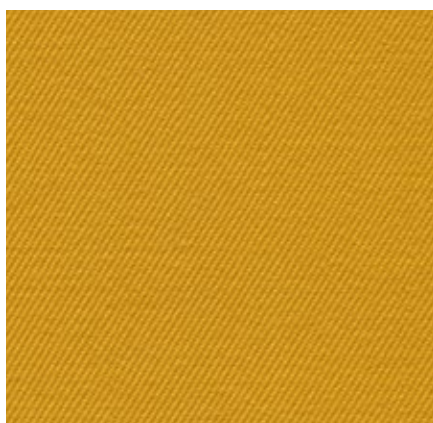
Tress is a flat woven fabric with a lively appearance that derives from the contrast between its even structure and the natural melange of colours. The combination of yarns with varied hues creates a harmonious and yet vibrant look. Thanks to its high wool content, Tress is a durable, easy-care material with a home-like aesthetic.

Tress is available in 22 colours.

Material	15% polyamide, 85% new wool
Weight	310 g/m ² (9.1 oz/y ²)
Width	142 cm +/- 2 cm (56")
Abrasion resistance	40,000 Martindale
Fastness to light	Type 6
Pilling	Grade 4-5
Fastness to rubbing	Grade 4-5 dry and wet



Twill Home/Office, F6o



The high percentage of natural fibres gives Twill very pleasant tactile qualities and an inviting appearance. Extremely durable with excellent abrasion resistance, it combines the qualities typically found in home furnishings with the demanding requirements of the project sector.

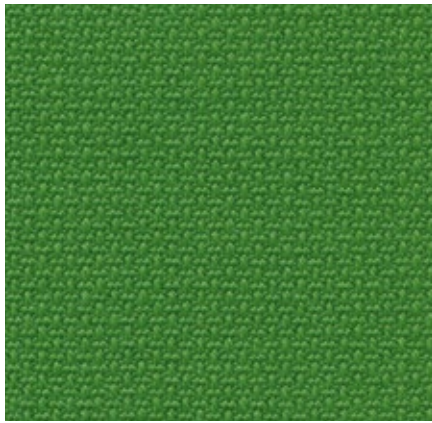
Twill is available in 18 colours.

Material	30% polyamide, 70% new wool
Weight	325 g/m ² (9.6 oz/y ²)
Width	155 cm +/- 2 cm (61")
Abrasion resistance	100,000 Martindale
Fastness to light	Type 6
Pilling	Grade 4-5
Fastness to rubbing	Grade 4-5 dry and wet



Volo Home/Office, F60

vitra.



Volo is a finely structured wool blend with a refined weave that gives it an elegant appearance. This expressive textile shows strong solid colours to full advantage while simultaneously offering pleasant tactile qualities. With its soft look and appealing texture, Volo is a perfect fit for home interiors, but it is also well suited for use in the contract sector.

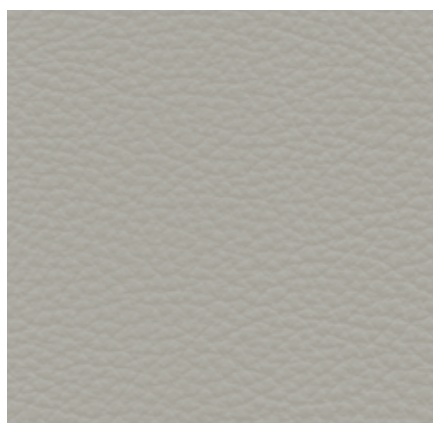
Volo is available in 17 colours.

Material	15% polyamide, 85% new wool
Weight	435 g/m ² (12.8 oz/y ²)
Width	145 cm +/- 3 cm (57")
Abrasion resistance	100,000 Martindale
Fastness to light	Type 6
Pilling	Grade 4-5
Fastness to rubbing	Grade 4-5 dry and wet



Leather Home/Office, L20

vitra.



The standard grade leather used by Vitra is a robust cowhide leather, dyed-through, pigmented and embossed with an even grain pattern. Since it is hard-wearing and easy to maintain, it can also be used in office environments.

Leather is available in 16 colours.

Material

Robust cowhide with a distinctive, even grain

Fastness to light

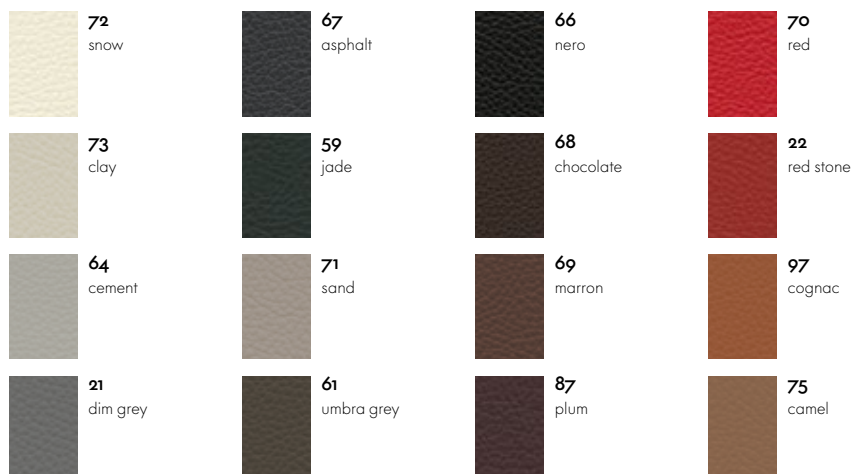
Type 6

Thickness

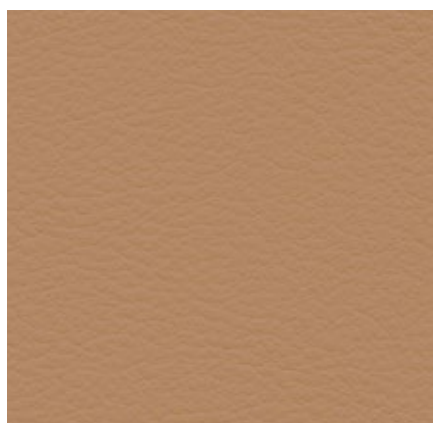
1.1–1.3 mm

Fastness to rubbing

Grade 4 dry and wet



Leather Premium Home/Office, L40



Leather Premium is a relatively smooth cowhide leather with a flat grain and fine top sheen. It is dyed-through and lightly pigmented. The semi-aniline leather is soft to the touch, like a leather glove. Leather Premium is available in 22 colours.

Material

Semi-aniline nappa leather with a very soft and supple feel

Fastness to light

Type 5

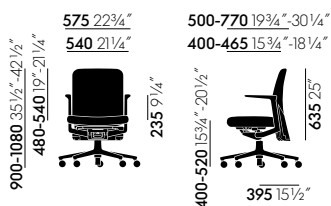
Thickness

1.1–1.3 mm

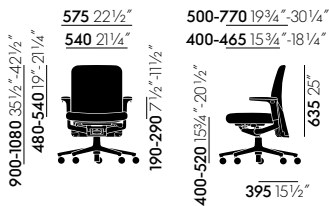
Fastness to rubbing

Grade 4 dry and wet

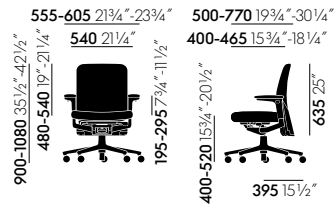




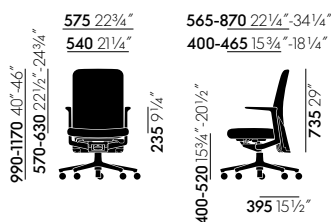
Pacific Chair with low upholstered backrest and non-adjustable armrests



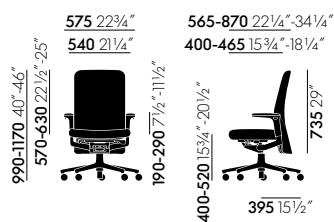
Pacific Chair with low upholstered backrest and height-adjustable armrests



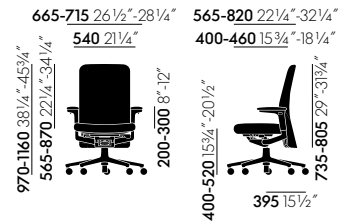
Pacific Chair with low upholstered backrest and 3D armrests



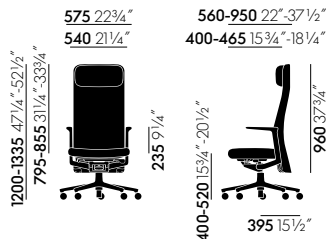
Pacific Chair with medium upholstered backrest and fixed armrests



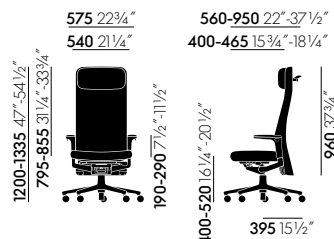
Pacific Chair with medium upholstered backrest and height-adjustable armrests



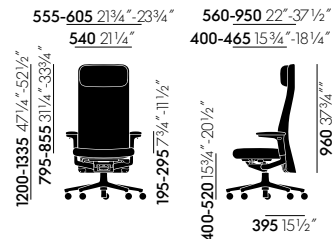
Pacific Chair with medium upholstered backrest and 3D armrests



Pacific Chair with high upholstered backrest and non-adjustable armrests



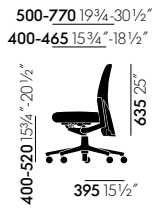
Pacific Chair with high upholstered backrest and height-adjustable armrests



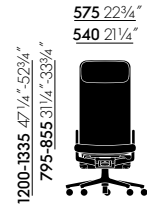
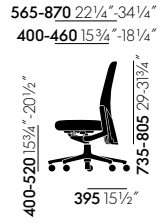
Pacific Chair with high upholstered backrest and 3D armrests



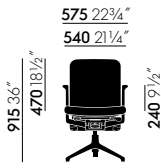
Pacific Chair with low upholstered backrest,
without armrests



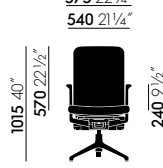
Pacific Chair with medium-height upholstered
backrest, without armrests



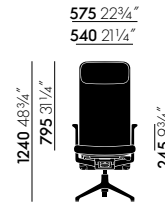
Pacific Chair with high upholstered backrest,
without armrests



Pacific Chair with low upholstered backrest,
fixed armrests and four-star base



Pacific Chair with medium-height upholstered
backrest, fixed armrests and four-star base



Pacific Chair with high upholstered backrest,
fixed armrests and four-star base

