

caracole



SWING INTO ACTION

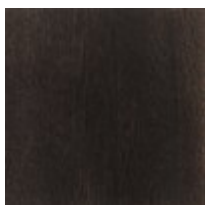
m012-016-213

COLLECTION: Modern Uptown Dining Room

DIMENSIONS: 67.25W x 19D x 32.25H

Smooth, classic lines punctuated with memorable hardware turn this buffet into a gentlemanly piece. Not only would it make a grand centerpiece for a dining room, but its eight drawers and generous center storage make it functional in an office or bedroom as well. The smooth Primavera wood has a high Smoked Peppercorn sheen offset by a metallic Jazzy Taupe base. In the center of the doors are oversized metal and leather round pulls. The doors fully open to reveal an adjustable glass shelf. Each drawer has a smaller, handsome leather and metal pull that adds to the piece's strapping appeal.

FINISH:



Smoked
Peppercorn

Jazzy Taupe