

# caracole



## WINDING DOWN

uph-sofsec-06a

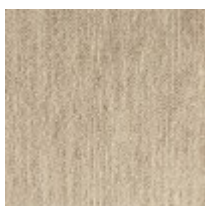
**COLLECTION:** Caracole Upholstery

**DIMENSIONS:** 118W x 40.25D x 28H

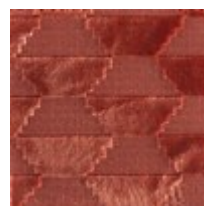
A sectional sofa that showcases a sophisticated update to the popular track arm style. Our version offers deep, lush seating, over-scaled, curving track arms, and exposed wood legs. Dressed in an incredibly soft, low-cut, pile Chenille in a fashion-forward menswear, it's the perfect sofa to anchor a living or family room. Pillows are dressed in a complementary mix of materials and textures from an embroidered jute and linen to a tonal silver-grey to a cut geometric velvet in a splashy sienna.

**CONSTRUCTION:** Spring down cushion. | 8-way hand tied seat. | Feather down pillows.

## FABRIC:



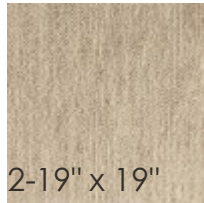
Body Fabric:



2439-35CC



Pillow Fabric: 2-  
19" x 19" Pillows  
8148-78CC with  
Contrast Welt  
2439-35CC



2-19" x 19"  
Pillows 3092-  
70CC with  
Contrast Welt  
2439-35CC



2-18"x18" Pillows  
8141-24CC with  
Contrast Welt  
2439-35CC



1-20" x 20"  
Pillow 8149-  
87CC