

# caracole



## A LA CARTE

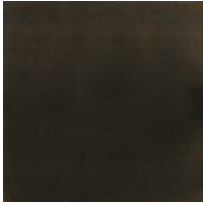
con-sidcha-003

**COLLECTION:** Caracole Classic

**DIMENSIONS:** 23W x 26.5D x 39H

\*AVAILABLE IN CARACOLE COUTURE CUSTOM UPHOLSTERY PROGRAM\* This is a great go-to chair for a wide variety of dining tables. The A La Carte chair is upholstered in a neutral linen fabric with an Almost Black leg that is accessorized with a sharp silver ferrule. The tall back makes this an exceptionally comfortable seat for a lengthy dinner party. Feel free to dress it up or down. It's your choice!

**FINISH:**



Almost-Black

**FABRIC:**



Fabric: 2003-  
43CC