

# caracole



## AN ARM AND A LEG

uph-chawoo-48b

**COLLECTION:** Caracole Upholstery

**DIMENSIONS:** 29.75W x 38D x 33.75H

This ever-popular Caracole chair is dressed in a casually-chic textured herringbone fabric in a soft bisque color and finished in Mineral, a warm, burnished gold tone. Drawing inspiration from French designs, this flirty and comfortable chair is casual, not fussy. Nailhead detail defines the chair's arms

and frame. Loose back pillow and a down-filled accent pillow add polish and comfort. Mixes easily with a variety of styles.

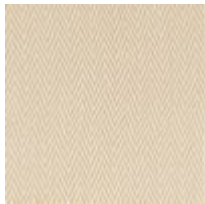
**CONSTRUCTION:** Ultra plush down cushion. | 8-way hand tied seat. | Feather down pillows.

**FINISH:**

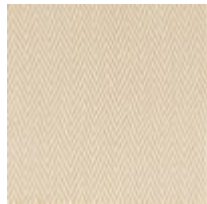


Mineral

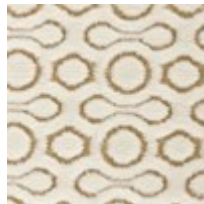
**FABRIC:**



Body Fabric:  
2405-34CC



Pillow Fabric: 1-  
20" x 20" Pillow  
2405-34CC



1-20" x 14"  
Pillow 8119-  
34CC