

# caracole



## I'M FROND OF YOU

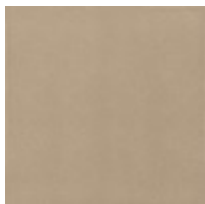
cla-419-046

**COLLECTION:** Caracole Classic

**DIMENSIONS:** 57.25W x 1.5D x 37.5H

Whether you've just returned from the coast or are dreaming of it, you'll love the way this mirror captures its essence. Inspired by a palm frond, its distinctive look will beautify a bedroom, entry, hallway or living space. It features a decorative center vein finished in Neutral Metallic—offering the perfect complement to nearby metallic finishes of both silver and gold. Hang one mirror or create a grouping of them for maximum impact.

## FINISH:



Neutral\_Metallic

