

caracole



CHITTER CHATTER

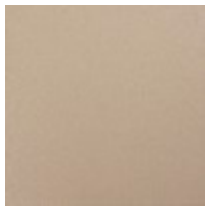
cla-418-272

COLLECTION: Caracole Classic

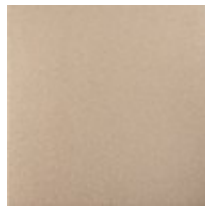
DIMENSIONS: 20.25W x 24.5D x 39.5H

Every well-hosted event starts with comfortable dining and this sophisticated armchair ensures a divine experience. Its classic silhouette is illuminated with a Radiant Pearl finish and Sparkling Argent highlights that accentuate its lovely curves. Sabre legs distinguish its back while tapered front legs convey timeless elegance. Upholstered in a stunning neutral fabric, it makes the perfect complement to a stylish dining table.

FINISH:

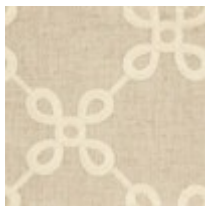


Radiant Pearl



Sparkling
Argent

FABRIC:



2321-87CC,
8268-35CC